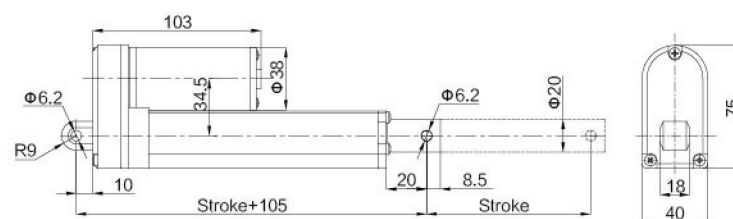


Model: MPP-ECH

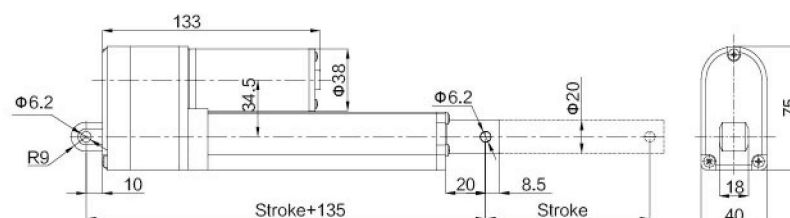


Installations Dimension

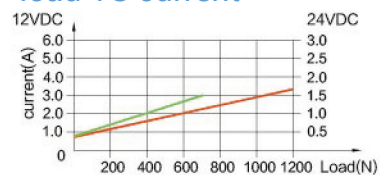


Built in potentiometer or Hall

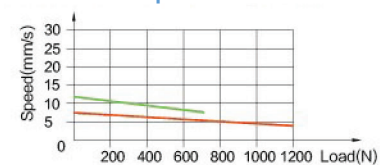
Installations Dimension



load VS current



load VS speed



Specifications

Input Voltage	48V / 36V / 24V / 12V DC
Load Capacity	1200N
Speed	5 ~ 40mm/s
Stroke	Customize
Type of Duty	10%, 2min. on / 18min. off
Limit Switches	Inner
Operation Temperature	-15°C ~ 45°C
Protection Class	IP65